

Department of Engineering
Tim Bryan, P.E., County Engineer

3137 South Liberty Street, Canton, MS 39046
Office (601) 790-2525 FAX (601) 859-3430

MEMORANDUM

January 13, 2021

To: Sheila Jones, Supervisor, District I
Trey Baxter, Supervisor, District II
Gerald Steen, Supervisor, District III
Karl Banks, Supervisor, District IV
Paul Griffin, Supervisor, District V

From: Tim Bryan, P.E., PTOE
County Engineer

Re: Discussion
Construction Sequencing of the Proposed Parking Lot at the Tax Assessor's Office

The Engineering Department is presenting the attached plan to show how construction activities will be performed in order to limit the disruption to the business activities taking place at the building.

Department of Engineering
Tim Bryan, P.E., County Engineer

3137 South Liberty Street, Canton, MS 39046
Office (601) 790-2525 FAX (601) 859-3430

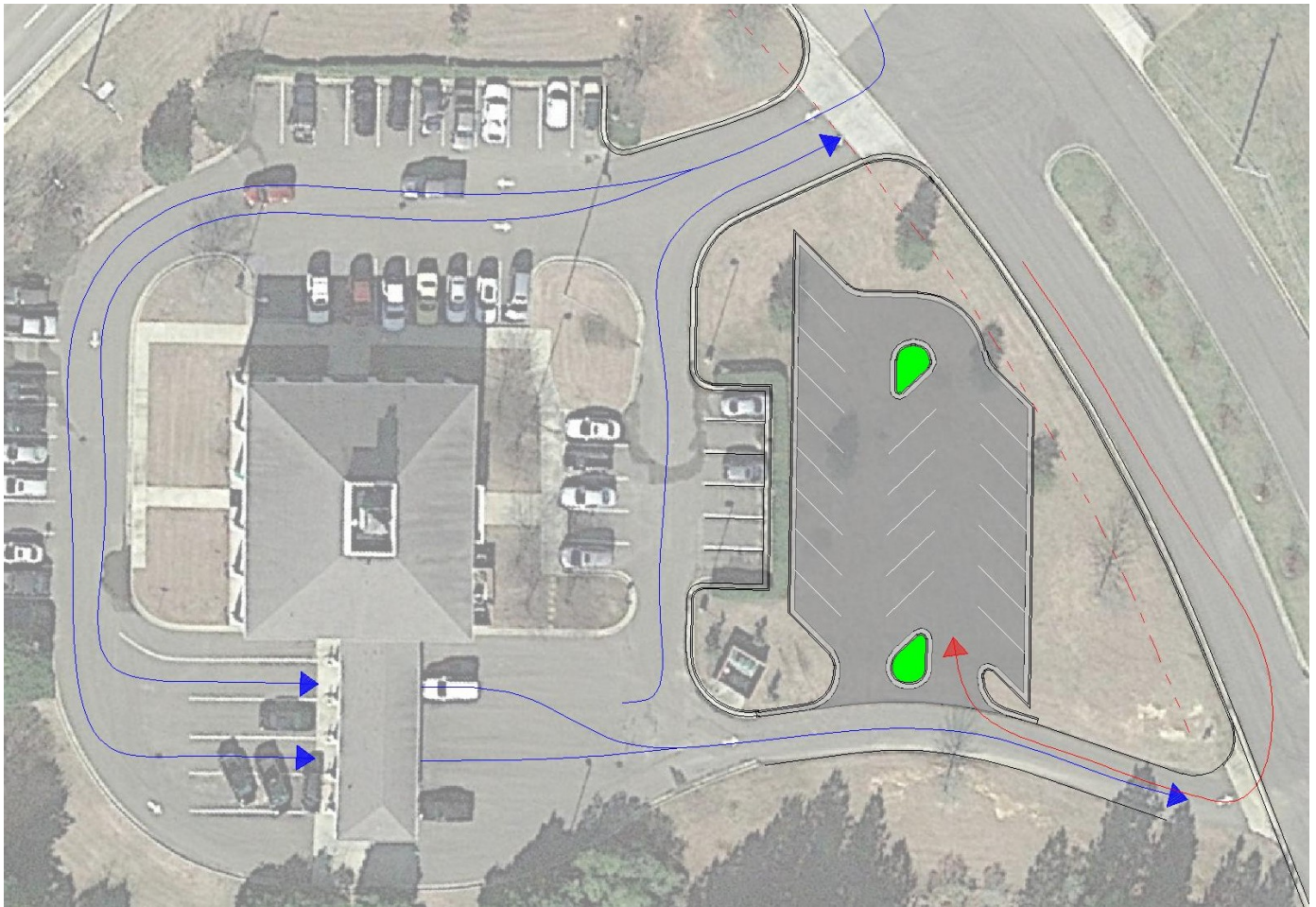
Traffic Impact to Construction Activities for Proposed Parking Lot at Tax Assessor’s Office

Current traffic enters the facility through the northernmost driveway and either parks or lines up for the drivethru. Vehicles either leave the facility through the closest exit to their parking space or through the southern driveway when using the drivethru.

Construction traffic will enter and exit the site through the southern driveway during the period of 8am to around 4pm daily. Personnel will be in place to make sure that exiting constituents are either temporarily stopped or rerouted to the northern exit when trucks are entering the site.

It is estimated that 52 truck trips will be required during the excavation and base installation over a week period. Curb and gutter placement should require 4 trucks and asphalt placement should require 12. On no day should there be over 15 truck trips which calculates to 1 entry and exit every 15 minutes or so.

Cobblestone Drive is 24 ft wide each direction adjacent to the proposed parking lot. Trucks waiting to deliver will stage along the curb in this area which will still allow a full 12 ft travel lane for vehicles to continue south on Cobblestone Drive.



SHEILA JONES
District One

TREY BAXTER
District Two

GERALD STEEN
District Three

KARL BANKS
District Four

PAUL GRIFFIN
District Five